



Water Tank Line



**Black or Dark Opaque Green
Vertical Water Tanks range in
size from 205 to 10,000 gallons**



Snyder provides a wide range of above ground storage tanks for indoor or outdoor use where wells do not meet the consumption needs of the users. All Snyder water tanks are manufactured from FDA compliant resins and manufactured in NSF inspected facilities. Optional fittings are available.



Molded-in platform for 18" or 24" lids aids in leak-proofness.



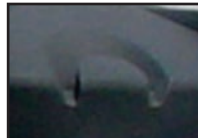
Top Fitting is a 1 1/2" polypropylene bulkhead fitting for float valves.



Molded-in gallonage graduation marks



Lower fitting is a 2" bolt-on fitting with siphon for exceptional drainage.



Integral tie-down lugs for positive anchoring.

- The black or dark green color limits sunlight penetration and inhibits algae growth.
- All materials are UV stabilized for long-term outdoor service.
- Tanks are manufactured from FDA-compliant resin for potable water.
- 2" bolted-on drain fitting and 1 1/2" bulkhead float valve fitting are standard on most tanks.
- Molded-in gallonage markers on most tanks.
- Weatherproof threaded lids with built-in vents. Additional venting may be required.
- Molded-in tie-down slots and lifting lugs.
- Off-set fill-wells.



Snyder also offers a variety of natural colored vertical storage tanks, horizontal tanks, utility tanks (pick up tanks), and PCO tanks ideal for hauling water.



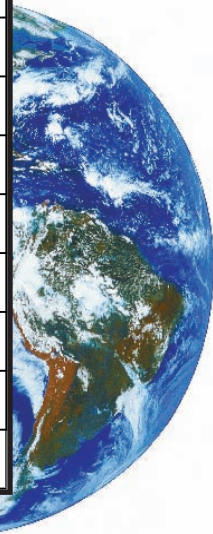
P.O. Box 4583 • Lincoln, NE • 68504

Phone: 402-467-5221 • Fax: 402-465-1220 • Email: sales@snydernet.com
Other shipping facilities: Marked Tree, AR • Philippi, WV • Chowchilla, CA

www.snydernet.com

Specifications

Simplex Number	Part Number		Design Capacity	Tank F.O.B.	Diameter	Height	Fill Opening	Ftg. Pkg.
WB12	1540400W94201	Black	205 Vertical	C	42"	43"	10"	B
WG12	1540400W99801	Green		C				B
WB23	8040000W94201	Black	300 Low Vertical	M	46"	48"	18"	A
WG23	8040000W99801	Green		M				A
WB24	1630200W94201	Black	310 Vertical	C	42"	59"	10"	B
WG24	1630200W99802	Green		C				B
WB32	8060000W94202	Black	550 Vertical	M	64"	46"	18"	A
WG32	8060000W99801	Green		M				A
WB33	1820000W94202	Black	550 Vertical	L,C	64"	46"	18"	A
WG33	1820000W99802	Green		L,C				A
WB40	1830100W94202	Black	1100 Narrow Vertical	L, M	64"	87"	18"	A
WG40	1830100W99801	Green		L, M				A
WB42	1710100W94202	Black	1100 Vertical	L	86"	53"	18"	A
WG42	1710100W99801	Green		L				A
WB43	8120000W94202	Black	1100 Vertical	M	86"	55"	18"	A
WG43	8120000W99801	Green		M				A
WB44	1710200W94203	Black	1100 Vertical	C	86"	53"	18"	B
WG44	1710200W99804	Green		C				B
WB45	1770000W94203	Black	1500 Vertical	L	86"	70"	18"	A
WG45	1770000W99801	Green		L				A
WB46	1770300W94204	Black	1500 Vertical	C	86"	70"	18"	B
WG46	1770300W99803	Green		C				B
WB47	8120100W94201	Black	1500 Vertical	M	86"	71"	18"	A
WG47	8120100W99801	Green		M				A
WB60	5090100W94201	Black	2500 Vertical	L	90"	106"	18"	A
WG60	5090100W99801	Green		L				A
WB61	8140000W94201	Black	2500 Vertical	M	90"	106"	18"	A
WG61	8140000W99801	Green		M				A
WB62	5090200W94204	Black	2600 Vertical	C	96"	89"	24"	B
WG62	5090200W99804	Green		C				B
WB70	7410000W94203	Black	3000 Vertical	L	102"	96"	18"	A
WG70	7410000W99802	Green		L				A
WB71	8390000W94201	Black	3000 Vertical	M	102"	96"	18"	A
WG71	8390000W99801	Green		M				A
WB73	7410200W94203	Black	3000 Vertical	C	102"	93"	24"	B
WG73	7410200W99803	Green		C				B
WB72	5130200W94205	Black	3000 Vertical	C	96"	109"	24"	B
WG72	5130200W99804	Green		C				B
WB80	7420000W94201	Black	4700 Vertical	L	102"	142 1/2"	18"	A
WG80	7420000W99801	Green		L				A
WB81	8210000W94201	Black	5000 Vertical	M	102"	153"	18"	A
WG81	8210000W99801	Green		M				A
WB83	7420100W94207	Black	5000 Vertical	C	102"	157"	24"	B
WG83	7420100W99804	Green		C				B
WB84	7000200W94205	Black	5000 Low Vertical	C	144"	87"	24"	B
WG84	7000200W99804	Green		C				B
WB100	5330200W94205	Black	10000 Vertical	C	144"	161"	24"	B
WG100	5330200W99804	Green		C				B
WB101	5330000W94202	Black	10500 Vertical	L,P	142"	169 3/4"	24"	B
WG101	5330000W99801	Green		L,P				B



A = Bottom Fitting is one 2" bolt-on fitting with siphon tube (P/N 34700842) B = Bottom Fitting is one 2" bolt-on fitting with siphon tube (P/N 34100103)
 Top fitting is one 1 1/2" bulkhead fitting (P/N 34100144) Top fitting is one 1 1/2" bulkhead fitting (P/N 34100144)

Snyder warrants that if any manufactured tank product is proven to be defective in material or workmanship within three (3) years from the date of manufacture, Snyder will (at company option), either replace or repair said part. This standard limited warranty does not apply to damages resulting from misuse, improper application of recommended materials, accident, or improper installation or maintenance. Remedy to the buyer is limited to the replacement of any defective product (or its component, where applicable), F.O.B. point of manufacture. The buyer's remedy under this warranty does not include any other direct or consequential damages which result from defects in material and/or workmanship of its products. **TANKS ARE ENGINEERED FOR WATER STORAGE ONLY.**



P.O. Box 4583 • Lincoln, NE • 68504
 Phone: 402-467-5221 • Fax: 402-465-1220
 Other shipping facilities: Marked Tree, AR • Philippi, WV • Chowchilla, CA

May 2010

www.snydernet.com